

V202501-EN

**MiMA**<sup>®</sup>  
Min. Space Max. Performance

BANYITONG SCIENCE & TECHNOLOGY DEVELOPING CO.,LTD.

*Since 1994*

# Electric Articulated Forklift

MJ20&30  
MJD25 Series

**Max. lift height: 12500mm**

**MiMA**<sup>®</sup>  
Min Space,Max Performance



BANYITONG SCIENCE & TECHNOLOGY DEVELOPING CO.,LTD  
Tel: +86 551 6219 3112  
E-mail: sales@mimachina.com  
Website: www.mimaforklift.com  
Add: Crossing of Daihe Road and Cailun Road, Hefei, China



Efficient Indoor & Outdoor One-Stop Handling, Narrow Aisle Expert

[www.mimaforklift.com](http://www.mimaforklift.com) |

# IS YOUR WAREHOUSE FACING THESE CHALLENGES AND CONSIDERING AN ARTICULATED FORKLIFT?



## WASTED SPACE

Inefficient shelving layout makes VNA operation difficult.



## HIGH-SHELF HANDLING ISSUES

Need more precise control and strong lifting capabilities for high-level stacking.



## LACK OF VERSATILITY

Poor performance when switching between indoor and outdoor environments.



## NEED FOR CUSTOMIZATION

Standard equipment often fails to meet your specific industry demands.

# MIMA VERSATILE FORKLIFT THAT COMBINES POWER, EFFICIENCY, AND ADAPTABILITY

For those companies looking for a VNA machine suitable for both indoors and outdoors, which offers ergonomic comfort and easy operation, MiMA Forklift provides you with a VNA Articulated Truck Solution.

MiMA MJ Series has great climbing and reach capabilities to optimize efficiency, performance, and productivity suited for multiple working environments. And all customized options are based on your unique needs.

- Suitable tyres for indoor and outdoor one-stop use
- Exceptional climbing power, long endurance, cost-saving, and reliability
- Excellent ergonomics, enhanced safety, quality design and manufacturing processes
- 210° Swing mast for easy operation and flexible stacking of goods in the VNA



# YOUR RELIABLE CHOICE MIMA ARTICULATED FORKLIFT

## ONE TRUCK, MULTIPLE APPLICATIONS

Replace multiple machines with just one MiMA articulated forklift, saving on equipment and labor costs.

## MAXIMIZED WAREHOUSE SPACE

By reducing aisle widths and optimizing layouts, MiMA articulated forklifts significantly increase warehouse storage capacity, making the most of your existing space.



## HIGH PERFORMANCE & LOW OPERATING COSTS

MiMA articulated forklifts are energy-efficient, offering low maintenance costs and high uptime.

## CUSTOMIZED SOLUTIONS

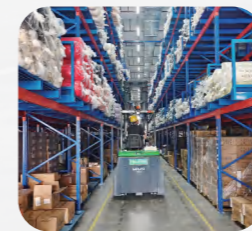
Multiple configuration options and customized solutions engineered to meet your industry-specific requirements.

# TARGET INDUSTRIES

For a reliable, cost-effective, and high-performance forklift, MiMA's MJ Series articulated forklift provides the best solution for narrow aisle and high-density storage applications. Maximize your warehouse space, improve efficiency, and reduce costs with MiMA advanced technology.



Retail and Logistics



Textile Industry



Food and Beverage Industry



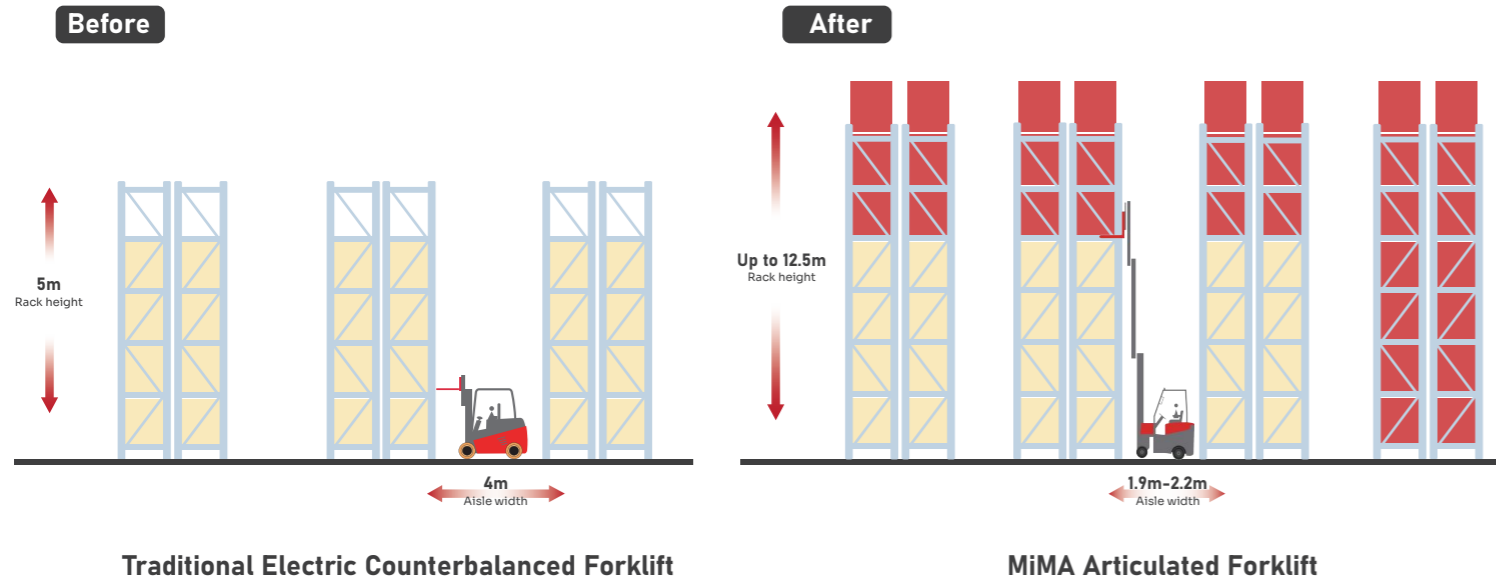
Cold and Ambient Storage Cycling

# ADVANTAGES COMPARISON

MJ articulated forklift has the efficiency of a counterbalanced forklift and the same reach capacity as a reach truck. The articulated forklift can perform all operations within a narrow aisle, reducing transfer time and improving efficiency. One MiMA Articulated truck is enough, bringing your operators a one-stop driving experience.

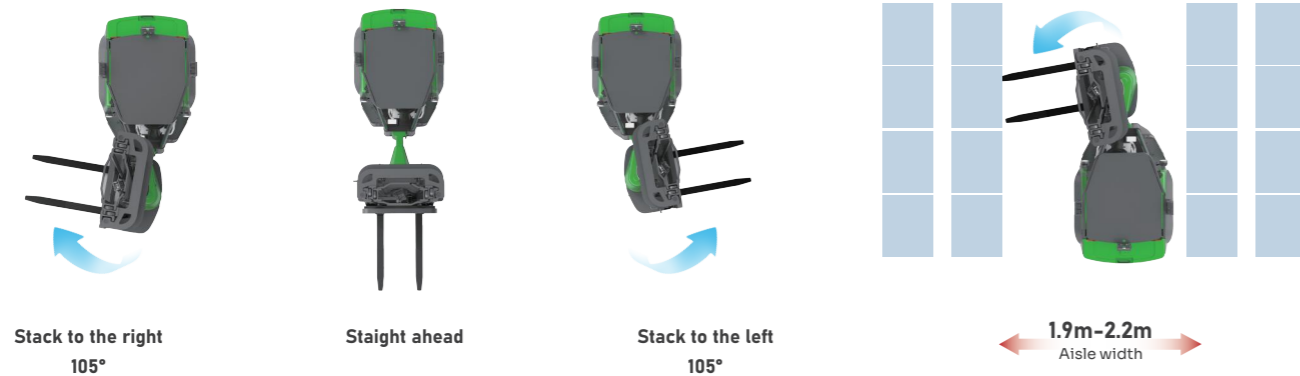
- **Narrow Aisles and High-Density Storage**

- With a 1.9-meter aisle width, it is ideal for high-density storage in narrow aisles. By optimizing rack layouts and increasing height, it improves warehouse capacity by **over 50%** compared to traditional counterbalanced forklifts.



- **Works in Aisles Narrow as 1.9m**

- Its flexible steering (articulated fork) allows precise stacking and material handling in tight spaces, making it suitable for logistics centers and distribution warehouses. The MJ series saves more storage space, **offering a 30% increase** in warehouse capacity.



- **Indoor and Outdoor Operations**

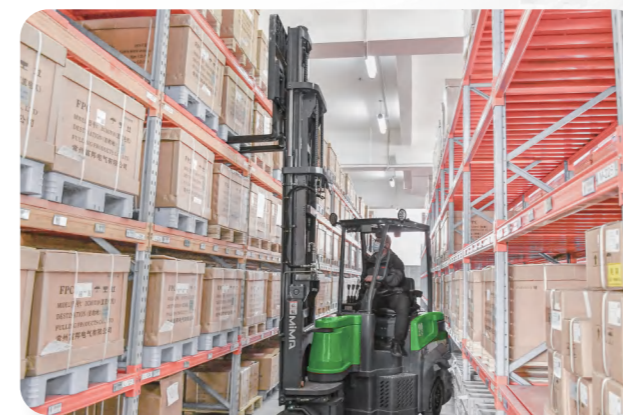
- Combines the stability of counterbalanced forklifts with the agility of reach trucks. Suitable for both indoor and outdoor operations that require frequent cross-regional work, reducing the need for equipment switching.



Outdoor

- **Heavy Lifting and High Reach**

- Designed for handling heavy loads and reaching high positions, such as stacking finished products or shelving raw materials.



# FRONT-DRIVEN VS REAR-DRIVEN

## For Your Multiple Requests

The newly developed MJ Series comes with a maximum load capacity of 2000kg to 3,000kg, and max. lifting height up to 12500mm. It is available in both narrow and wide-body designs for your various rack layout needs.

### MJ20/30 ▶

MJ20/30 are primarily designed for efficient operations in narrow aisles, with more options in load capacity including 2-ton and 3-ton, and lift heights up to 12.5 meters. MJ30 offers a higher rated load and is ideal for medium-heavy work environments. They're both cost-effective choices for stacking and transport, improving performance and cutting down on costs.

### Key Specs ▶

Mast type

**Triplex full free mast**

Drive type

**Front-driven**

Max. Lift height

**12500/8000mm**

Swing angle

**210°**

Load Capacity

**2000/3000kg**



### ◀ MJD25

The MJD25 offers both power and flexibility for a wide range of tasks. It features an advanced four-stage mast, making it ideal for container loading, unloading, and tight spaces. With better visibility and a more compact profile, it is built for high transport rates in both indoor and outdoor environments.

### ◀ Key Specs

Mast type

**Quad full free mast**

Drive type

**Rear-driven**

Max. Lift height

**8000mm**

Swing angle

**180°**

Load Capacity

**2500kg**

## KEY FEATURES

MiMA provides a comprehensive solution with advanced technology, ensuring unmatched safety, precision, and efficiency in every operation.

### ● Power Meets MiMA Reliability

- Equipped with a **full AC system**, the MJ Series ensures maintenance-free operation and efficient performance.
- Advanced **Curtis controllers** and high-efficiency motors offer a smooth and stable driving experience, precise lifting, and energy savings.

### ● Ergonomic Comfort for Operators

- Innovative designs like **wide-view masts** and ergonomic controls allow operators to work faster with improved visibility and safety.
- **Adjustable seats** and **steering wheels** fit operators into their optimal driving positions, reducing fatigue.

### ● Gain Flexibility, Reduce Costs

- The articulated mast swing angle reaches up to **210°**, enabling superior maneuverability in tight spaces and narrow aisles and increasing storage density without extra costs.
- Features such as **automatic battery water replenishment** and easily accessible maintenance panels reduce downtime.

### ● Safety You Can Trust

- **OPS (Operator Presence System)** ensures safe operation by activating the forklift only when the driver is seated.
- Adaptive hydraulic buffers for lifting and lowering protect cargo and pallets, landing and handling the cargo securely during the whole operation.
- **Speed-limiting features** for turns and high-lift operations enhance stability in challenging conditions.
- **LED lights, HD cameras, warning systems**, and a robust overhead guard ensure safe operation even in low-visibility environments.
- **High-speed ratio gearbox** and Anti-slip technology prevent rollbacks on slopes, offering peace of mind during uphill or downhill tasks.

Overhead guard



HD camera



Wide-view masts



Convenient console



Suspension seat



**210°**

# MJD25

## DUAL-DRIVE SUPERIORITY WITH ALL-AROUND EXCELLENCE

### ● Engineered for Versatility

- Compact yet strong, MJD25 handles everything from tight containers to high-density VNA stacking.
- The advanced **quad full free mast** offers a lower mast-closed height and greater flexibility in confined spaces, with lift heights to 8 meters for versatile operations.
- With a 600mm load center and a wider side-shift range, the MJD25 provides greater stability and **higher load capacity** over similar models.



Low mast design enables handling inside containers

### ● Smart and Compact Design

- With an ultra-low overhead guard and a shorter overall length, the MJD25 combines a compact body with big power for superior maneuverability.
- The standard **lithium battery** setup saves space, contributing to the compact design of the whole vehicle.

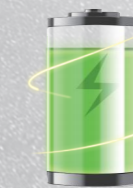
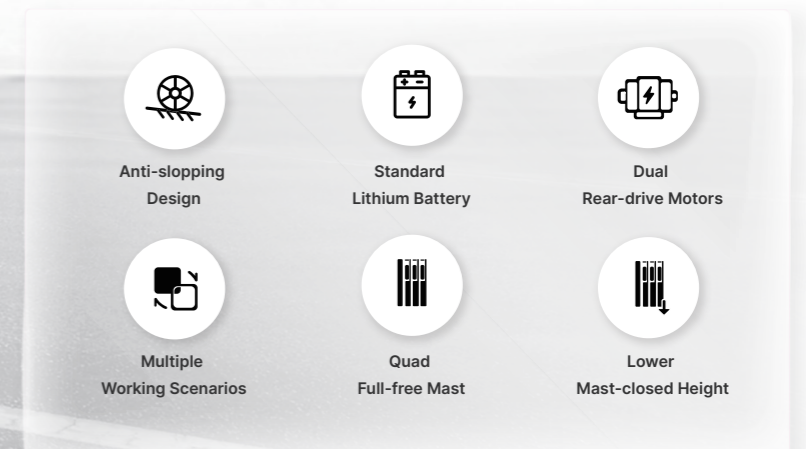


A ground clearance of just 70mm

Handle steeper inclines (Up to 15%)

### ● Stability and Performance Redefined

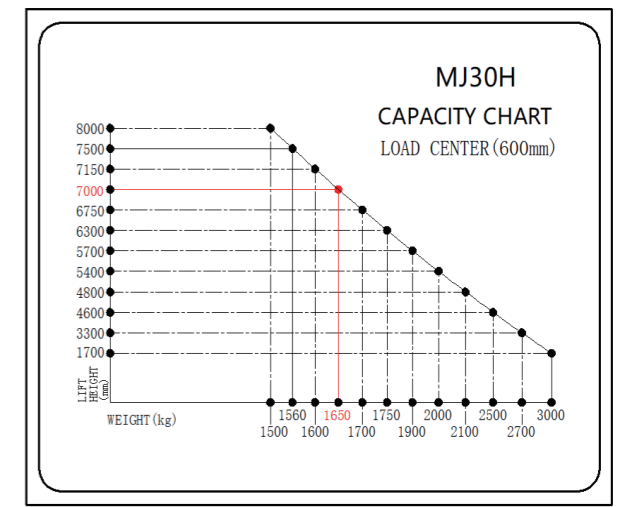
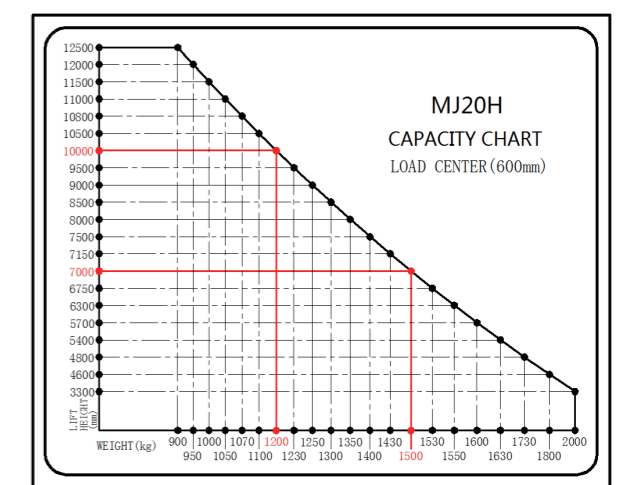
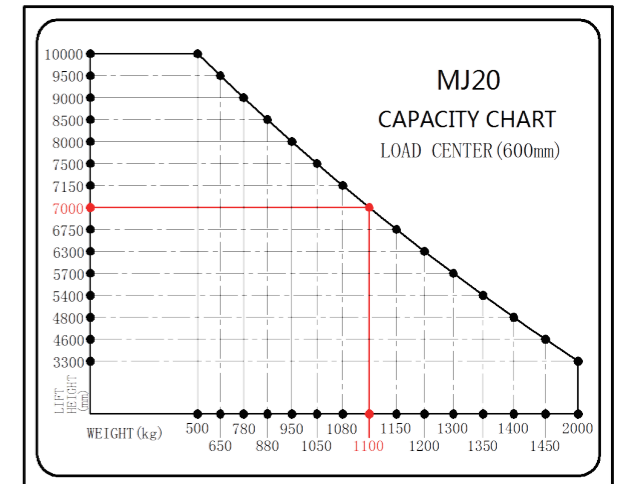
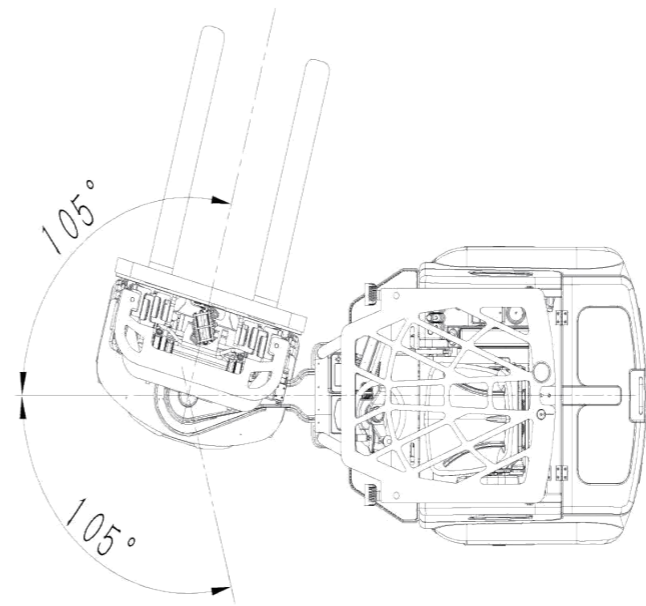
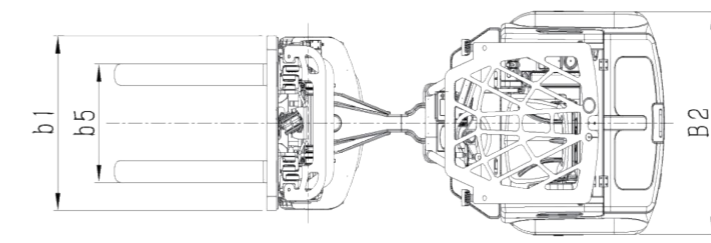
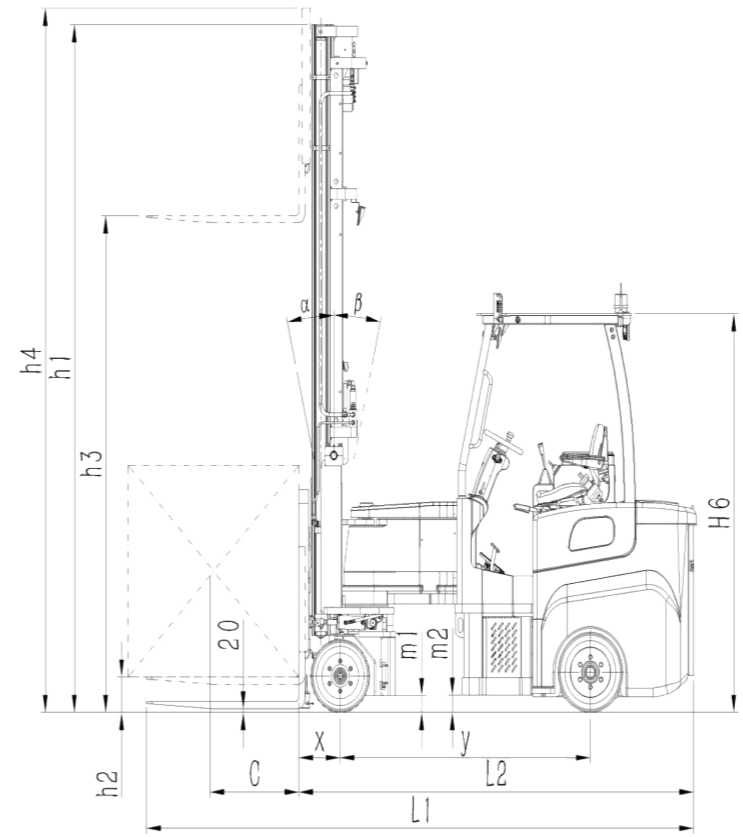
- Dual rear-drive motors and a high-speed gearbox make the MJD25 more stable and capable of handling inclines up to 15%.
- A ground clearance of just 70mm gives the MJD25 better stability and visibility, ideal for low-clearance applications, outperforming front-wheel-drive models.
- **PU front wheels** offer great load support and stability, while **Rubber rear tires** ensure comfort and better traction.



Standard Li-on battery

# SPECIFICATION

Characteristics						
1.1	Brand	MIMA	MIMA	MIMA	MIMA	
1.2	Product Model	MJ	MJ	MJ	MJ	
1.3	Vehicle Model Code	MJ20(Narrow Body)	MJ20(Wide Body)	MJ30(Wide Body)	MJD25	
1.4	Power type	Battery	Battery	Battery	Battery	
1.5	Operation	Seated	Seated	Seated	Seated	
1.6	Load capacity	Q(kg)	2000	2000	3000	2500
1.7	Load center distance	C(mm)	600	600	600	600
1.8	Front overhang	x(mm)	285	285	285	310
1.9	Wheelbase	y(mm)	1720	1720	1720	1815
Weight						
2.1	Service Weight(incl. battery)	kg	7460	8140	8280	8060
2.2	Axle loading, laden, front/rear	kg	5290/4250	5600/4650	6830/4450	5460/5220
2.3	Axle loading, unladen, front/rear	kg	2250/5210	2470/5670	2430/5850	1710/6380
Wheel						
3.1	Tyre type		Solid Tyre	Solid Tyre	Solid Tyre	PU/Solid Tyre
3.2	Tyre size, front	mm	2×Φ413×178	2×Φ413×178	2×Φ413×178	365×200
3.3	Tyre size, rear	mm	2×Φ457×178	2×Φ457×229	2×Φ457×229	18×9×12.125
3.4	Wheels number, front/rear (X=driven)		2X/2	2X/2	2X/2	2/2X
3.5	Track width, front	b10(mm)	800	800	800	1095
3.6	Track width, rear	b11(mm)	1090	1220	1370	1190
Dimension						
4.1	Mast tilt angle, forward/backward	α/β(°)	1/3	1/3	1/3	1/3or3/3
4.2	Mast rotation angle	(°)	210	210	210	180
4.3	Mast retracted height	h1(mm)	Refer to the mast specification	Refer to the mast specification	Refer to the mast specification	2220-2795
4.4	Free Lift height	h2(mm)	Refer to the mast specification	Refer to the mast specification	Refer to the mast specification	1070-1645
4.5	Rated Lift height	mm	3300	3300	1700	3300
4.6	Lift height	h3(mm)	4600~10000	4600~12500	4600~8000	6000~8000
4.7	Mast extended height	h4(mm)	Refer to the mast specification	Refer to the mast specification	Refer to the mast specification	7196-9195
4.8	Overhead guard height	h6(mm)	2250	2250	2250	2260
4.9	Seat SIP point ground clearance	h7(mm)	1230	1230	1230	1230
4.1	Overall length	L1(mm)	3830	3830	3830	4040
4.11	Body to fork surface length	L2(mm)	2730	2730	2730	2940
4.12	Overall width	b1/b2(mm)	980/1260	980/1400	980/1600	1295/1420
4.13	Fork dimensions	s/e/l(mm)	50/100/1100	50/100/1100	45/125/1100	50/100/1100
4.14	Installation level	II	II	III	III	2A
4.15	Fork carriage width	b3(mm)	990	990	990	1100
4.16	Fork outside spread	b5(mm)	250~890	250~890	380~890	220~1050
4.17	Side shift distance	mm	±100	±100	±100	±143
4.18	Ground clearance (laden, center of mast)	m1(mm)	50	50	50	70
4.19	Ground clearance (laden, center of wheelbase)	m2(mm)	100	100	100	110
4.20	Aisle Width (800×1200 Pallet)	mm	1900	2100	2300	2134
4.20.1	Efficiency aisle Pallet to pallet distance≥	mm	2000	2200	2500	/
4.20.2	Pallet to pallet distance≥	mm	2200	2400	2700	/
4.20.3	Other stacking aisle width	mm	Refer to the mast specification	Refer to the mast specification	Refer to the mast specification	Refer to the mast specification
4.20.4	Min. main aisle width (800×1200 Pallet)	mm	2650	2650	2750	1930(1000x1200 Pallet)
4.21	Turning radius	Wa(mm)	2200	2200	2200	2115
Performance						
5.1	Travel Speed, laden/unladen	km/h	12/13	12/13	12/13	12/13
5.2	Lifting Speed, laden/unladen	mm/s	400/420	400/420	300/400	300/400
5.3	Lowering Speed, laden/unladen	mm/s	450/400	450/400	350/350	450/400
5.4	Max gradeability, laden/unladen	%(tanθ)	15/12	15/12	12/8	15/12
5.5	Service brake		Hydraulic	Hydraulic	Hydraulic	Hydraulic
Drive						
6.1	Drive motor, rating S2=60	kw	AC16.3	AC16.3	AC16.3	AC7.5x2
6.2	Lift motor, rating S3=15%	kw	AC15	AC15	AC21	AC21
6.3	Battery voltage/nominal capacity K5	(V)/(Ah)	80/500	80/500	80/500	/
6.4	Battery weight	kg	1380	1380	1380	660
6.5	Steering system		Hydraulic	Hydraulic	Hydraulic	Hydraulic
Others						
7.1	Lithium battery voltage/ nominal capacity (standard)	(V)/(Ah)	80/460	80/460	80/460	80/460



Note: The data for standard models in this series may vary depending on the configuration.

# LOAD PARAMETER TABLE

MJ20 Narrow Body									
Lift Height (mm)								Load capacity(kg)	
10000	500	470	450	430	410	390	370		
9500	650	620	580	560	530	510	490		
9000	780	740	700	670	640	610	580		
8500	880	830	790	750	720	690	660		
8000	950	900	850	810	780	740	710		
7500	1050	990	940	900	860	820	790		
7150	1080	1020	970	920	880	840	810		
7000	1100	1040	990	940	900	860	820		
6750	1150	1090	1030	980	940	900	860		
6300	1200	1140	1080	1030	980	940	900		
5700	1300	1230	1170	1110	1060	1010	970		
5400	1350	1280	1210	1160	1100	1050	1010		
4800	1400	1330	1260	1200	1140	1090	1050		
4600	1450	1370	1300	1240	1180	1130	1080		
3300	2000	1890	1800	1710	1630	1560	1500		
	600	650	700	750	800	850	900		
Horizontal load center distance(mm)									

MJ20H Wide Body									
Lift Height (mm)								Load capacity(kg)	
12500	900	850	810	770	730	700	670		
12000	950	900	850	810	780	740	710		
11500	1000	950	900	860	820	780	750		
11000	1050	990	940	900	860	820	790		
10800	1070	1010	960	920	870	840	800		
10500	1100	1040	990	940	900	860	820		
10000	1200	1140	1080	1030	980	940	900		
9500	1230	1160	1110	1050	1000	960	920		
9000	1250	1180	1120	1070	1020	980	930		
8500	1300	1230	1170	1110	1060	1010	970		
8000	1350	1280	1210	1160	1100	1050	1010		
7500	1400	1330	1260	1200	1140	1090	1050		
7150	1430	1350	1290	1220	1170	1120	1070		
7000	1500	1420	1350	1280	1220	1170	1120		
6750	1530	1450	1380	1310	1250	1190	1140		
6300	1550	1470	1390	1330	1270	1210	1160		
5700	1600	1510	1440	1370	1310	1250	1200		
5400	1630	1540	1470	1390	1330	1270	1220		
4800	1730	1640	1560	1480	1410	1350	1290		
4600	1800	1700	1620	1540	1470	1410	1350		
3300	2000	1890	1800	1710	1630	1560	1500		
	600	650	700	750	800	850	900		
Horizontal load center distance(mm)									

MJ30H Wide Body									
Lift Height (mm)								Load capacity(kg)	
12500	/	/	/	/	/	/	/	/	
12000	/	/	/	/	/	/	/	/	
11500	/	/	/	/	/	/	/	/	
11000	/	/	/	/	/	/	/	/	
10800	/	/	/	/	/	/	/	/	
10500	/	/	/	/	/	/	/	/	
10000	/	/	/	/	/	/	/	/	
9500	/	/	/	/	/	/	/	/	
9000	/	/	/	/	/	/	/	/	
8500	/	/	/	/	/	/	/	/	
8000	1500	1420	1350	1280	1220	1170	1120		
7500	1560	1480	1400	1340	1270	1220	1170		
7150	1600	1510	1440	1370	1310	1250	1200		
7000	1650	1560	1480	1410	1350	1290	1230		
6750	1700	1610	1530	1450	1390	1330	1270		
6300	1750	1660	1570	1500	1430	1370	1310		
5700	1900	1800	1710	1630	1550	1480	1420		
5400	2000	1890	1800	1710	1630	1560	1500		
4800	2100	1990	1890	1800	1710	1640	1570		
4600	2500	2370	2250	2140	2040	1950	1870		
3300	2700	2560	2430	2310	2200	2110	2020		
1700	3000	2840	2700	2570	2450	2340	2240		
	600	650	700	750	800	850	900		
Horizontal load center distance(mm)									

# MAST PARAMETER TABLE

Triplex full free mast											
Model	MJ30SQC-	46	48	54	57	63	67	70	71	75	80
Lift height	h3(mm)	4600	4800	5400	5700	6300	6750	7000	7150	7500	8000
Mast extended height	h4(mm)	5882	6082	6682	6982	7582	8032	8282	8432	8782	9282
Mast retracted height	h1(mm)	2818	2885	3085	3185	3385	3485	3568	3618	3734	3900
Free lift height	h2(mm)	1134	1200	1400	1500	1700	1950	2034	2084	2202	2368
Triplex full free mast											
Model	MJ20SQC-	46	48	54	57	63	67	70	71	75	80
Lift height	h3(mm)	4600	4800	5400	5700	6300	6750	7000	7150	7500	8000
Mast extended height	h4(mm)	5800	6000	6600	6900	7500	7950	8200	8350	8700	9200
Mast retracted height	h1(mm)	2818	2885	3085	3185	3385	3485	3568	3618	3734	3900
Free lift height	h2(mm)	1134	1200	1400	1500	1700	1950	2034	2084	2202	2368
Triplex full free mast											
Model	MJ20SQC-	85	90	95	100	105	108	110	115	120	125
Lift height	h3(mm)	8500	9000	9500	10000	10500	10800	11000	11500	12000	12500
Mast extended height	h4(mm)	9700	10200	10700	11200	11700	12000	12200	12700	13200	13700
Mast retracted height	h1(mm)	4067	4234	4400	4567	4734	4834	4900	5067	5234	5400
Free lift height	h2(mm)	2534	2700	2868	3034	3200	3300	3368	3534	3700	3868

Note [1]: The parameters for wide-body and narrow-body frames are the same;  
[2]: For custom specifications, please contact us.

# STACKING AISLE PARAMETER TABLE

MJ20 Narrow Body											
Pallet along fork dimensions (W)	Pallet along fork dimensions (L)										Swing angle°
	mm	1000	1100	1200	1300	1400	1500	1600	1700	1800	
	800	/	/	1900	2050	2150	2250	/	/	/	±105
	900	/	/	1950	2080	2180	2280	/	/	/	
	1000	1800	1900	2000	2100	2200	2300	2400	2500	2600	
	1100	1830	1930	2030	2130	2230	2330	2430	2530	2630	
	1200	1850	1950	2050	2150	2250	2350	2450	2550	2650	
	1300	1900	2000	2150	2200	2300	2400	2500	2600	2700	±100
	1400	2000	2100	2200	2300	2400	2500	2600	2700	2800	±95
	1500	2350	2450	2550	2650	2750	2850	2950	3050	3150	±90
	1600	2400	2500	2600	2700	2800	2900	3000	3100	3200	