

V202407-EN

MiMA[®]
Min. Space Max. Performance

BANYITONG SCIENCE & TECHNOLOGY DEVELOPING CO.,LTD.

Since 1994

Electric Counterbalance Forklift Truck

MK Series

Load Capacity: 1500kg-4000kg

MiMA[®]
Min Space,Max Performance



BANYITONG SCIENCE & TECHNOLOGY DEVELOPING CO.,LTD
Tel: +86 551 6219 3112
E-mail: sales@mimachina.com
Website: www.mimaforklift.com
Add: Crossing of Daihe Road and Cailun Road, Hefei, China



www.mimaforklift.com

MK Series

Upgraded 4-wheel Electric Forklift(1.5t-4t)

PERFORMANCE

The drive motor adopts an advanced horizontal parallel arrangement, with the battery sinking to the bottom of the vehicle. It has a low center of gravity, good stability, and excellent turning smoothness and driving control comfort.

Adopting a new concept and novel streamlined appearance design, the visual effect is improved. The vehicle is compact and simple in appearance, strong and reliable.

LED headlights, turn signals, and warning lights are low in energy consumption, safe and reliable, and provide good lighting and warning for night operations.

COMFORT

Scientific ergonomically designed steering wheel and the seat is adjustable front and rear, providing the operator with the best driving position to choose.

The wide field of vision mast design, which is not easy to block the line of sight and provides the operator with a broad field of vision.

The new large-screen LED instrument has power display, timing and fault diagnosis functions. The human-computer interactive interface is simple and easy to understand, has excellent visibility, beautiful, elegant, and intuitive.



SAFETY

The automatic ascending&descending speed limit and descending buffer functions effectively ensure the safety of the operation, while ensuring that the goods and pallets do not impact the ground, effectively protecting the goods and the ground.

Equipped with an active driver presence safety monitoring OPS system, the operation safety is effectively improved.

The functions such as reverse braking and anti-slipping on slopes, making it safe and reliable.



INNOVATION

The internationally advanced MOSFET AC controller system enables the forklift's walking, steering, lifting, tilting and other actions to be controlled by computer programs.

The high-frequency MOSFET integrated controller ensures smooth and accurate driving, lifting control and excellent speed regulation performance.

Excellent motor-electronic control matching performance, with regenerative braking and regenerative energy (when the forklift is decelerating and going downhill, the drive motor is converted into a generator, and the battery is reverse-charged through the controller, which is energy-saving and efficient).

EFFICIENCY

The ultra-low roof guard design can meet the requirements of operating in ordinary containers and in highly limited space conditions.

The hydraulic system is equipped with side shifter to adjustment operations, which effectively improves operational convenience and thus improves working efficiency.

MAINTENANCE

The AC motor is maintenance-free, with no maintenance costs such as replacing carbon brushes. The AC power system has high efficiency, complete protection functions, built-in speed sensor, temperature sensor, high reliability and long life.

The battery is designed with side access, making it easy to replace and maintain the battery.



SPECIFICATION

Characteristics

1.1	Manufacturer	MiMA	MiMA
1.2	Model	MK	MK
	Technical code	MK15M	MK15S
1.3	Power type	Battery	Battery
1.4	Operation type	Seated	Seated
1.5	Load capacity	Q(kg)	1500
1.6	Load center	C(mm)	500
1.7	Front overhang	x(mm)	402
1.8	Wheelbase	y(mm)	1500

Tyre&Wheels

3.1	Tyre type	Pneumatic	Pneumatic
3.2	Tyre size, front	6.50-10-10PR	6.50×10-10PR
3.3	Tyre size, rear	16×6-8-10PR	16×6-8-10PR
3.4	Number of tyres, front/rear(x=drive wheel)	2X/2	2X/2
3.5	Tread(centre of tyre), front	b10(mm)	950
3.6	Tread(centre of tyre), rear	b11(mm)	900

Dimensions

4.1	Mast tilt angle, F/R	α/β(°)	6/10	6/10
4.2	Mast closed height	h1(mm)	Refer to the mast specification	Refer to the mast specification
4.3	Free lift height	h2(mm)	145	145
4.4	Lift height of rated capacity	h3(mm)	3300	3300
4.5	Lift height	h3(mm)	Refer to the mast specification	Refer to the mast specification
4.6	Mast extended height(with load backrest)	h4(mm)	Refer to the mast specification	Refer to the mast specification
4.7	Overhead guard height	h6(mm)	2125	2125
4.8	Seaf SIP point ground clearance	h7(mm)	1100	1100
4.9	Height of traction pin from ground	h10(mm)	260	260
4.1	Overall length	L1(mm)	3297	3297
4.11	Length to fork face	L2(mm)	2227	2227
4.12	Overall width	b1/b2(mm)	1120	1120
4.13	Fork size	l/e/s(mm)	1070/100/35	1070/100/35
4.14	Installation level(ISO2328)		2A	2A
4.15	Fork carriage width	b3(mm)	1040	1040
4.16	Fork outside width	b5(mm)	1040 ~ 200	1040 ~ 200
4.17	Ground clearance at mast, loaded	m1(mm)	100	100
4.18	Ground clearance at centre of wheelbase, loaded	m2(mm)	110	110
4.19	Min. stacking aisle width for pallet 1000*1200MM	mm	3595	3595
	Min. stacking aisle width for pallet 8001200MM	mm	3790	3790
	Other stacking aisle width	mm		
4.2	Turning radius	Wa(mm)	1940	1940

Performance

5.1	Travel speed, loaded/unloaded	km/h	14.5/15	12/13
5.2	Lifting speed, loaded/unloaded	mm/s	290/440	260/400
5.3	Lowering speed, loaded/unloaded	mm/s	400/400	400/400
5.4	Max. traction(Load/unload)	N	11000	9500
5.5	Max. gradeability (Load/unload S2-2min)	%(tanθ)	15/25	13/22
5.6	Acceleration time, loaded/unloaded(10m)	S		
5.7	Service brake	Hydraulic	Hydraulic	Hydraulic
	Parking brake	Mechanical	Mechanical	Mechanical

Drive

6.1	Drive motor rating S2=60	kw	AC8	AC8
6.2	Lift motor rating S3=15%	kw	AC10.6	AC10.6
6.3	Lead-acid battery voltage/ Nominal Capacity)	V/Ah	48/480	48/400
6.4	Lead-acid battery capacity (Optional)	V/Ah	400	480
6.5	Max capacity for side change battery	Ah	480	480
6.6	Lead-acid battery weight	kg	760	700
6.7	Lithium battery voltage/ Nominal capacity	V/Ah	48/230	48/230
6.8	Lithium battery voltage/ Nominal capacity (Optional)	V/Ah	48/400	48/400
6.9	Lithium battery weight	kg		
7.1	Hydraulic system pressure		21.5	21.5

Characteristics

1.1	Manufacturer	MiMA	MiMA	MiMA	MiMA	MiMA	MiMA
1.2	Model			MK20	MK25	MK20	MK25
	Technical code	MK20H	MK25H	MK20M	MK25M	MK20S	MK25S
1.3	Power type	Battery	Battery	Battery	Battery	Battery	Battery
1.4	Operation type	Seated	Seated	Seated	Seated	Seated	Seated
1.5	Load capacity	Q(kg)	2000	2500	2000	2500	2000
1.6	Load center	C(mm)	500	500	500	500	500
1.7	Front overhang	x(mm)	450	450	450	450	450
1.8	Wheelbase	y(mm)	1650	1650	1650	1650	1650

Tyre&Wheels

3.1	Tyre type	Pneumatic	Pneumatic	Pneumatic	Pneumatic	Pneumatic	Pneumatic
3.2	Tyre size, front	7.00-12-14PR	7.00×12-14PR	7.00-12-14PR	7.00-12-14PR	7.00-12-14PR	7.00-12-14PR
3.3	Tyre size, rear	18×7-8-14PR	18×7-8-14PR	18×7-8-14PR	18×7-8-14PR	18×7-8-14PR	18×7-8-14PR
3.4	Number of tyres, front/rear(x=drive wheel)	2X/2	2X/2	2X/2	2X/2	2X/2	2X/2
3.5	Tread(centre of tyre), front	b10(mm)	970	970	970	970	970
3.6	Tread(centre of tyre), rear	b11(mm)	960	960	960	960	960

Dimensions

4.1	Mast tilt angle, F/R	α/β(°)	6/10	6/10	6/10	6/10	6/10
4.2	Mast closed height	h1(mm)					
4.3	Free lift height	h2(mm)	150	150	150	150	150
4.4	Liftheight of rated capacity	h3(mm)	3300	3300	3300	3300	3300
4.5	Lift height	h3(mm)					
4.6	Mast extended height(with load backrest)	h4(mm)					
4.7	Overhead guard height	h6(mm)	2150	2150	2150	2150	2150
4.8	Seaf SIP point ground clearance	h7(mm)	1130	1130	1130	1130	1130
4.9	Height of traction pin from ground	h10(mm)	250	250	250	250	250
4.1	Overall length	L1(mm)	3500	3500	3500	3500	3500
4.11	Length to fork face	L2(mm)	2430	2430	2430	2430	2430
4.12	Overall width	b1/b2(mm)	1160/1140	1160/1140	1160/1140	1160/1140	1160/1140
4.13	Fork size	l/e/s(mm)	1070/122/40	1070/122/40	1070/122/40	1070/122/40	1070/122/40
4.14	Installation level(ISO2328)		2A	2A	2A	2A	2A
4.15	Fork carriage width	b3(mm)	1040	1040	1040	1040	1040
4.16	Fork outside width	b5(mm)	1000 ~ 244	1000 ~ 244	1000 ~ 244	1000 ~ 244	1000 ~ 244
4.17	Ground clearance at mast, loaded	m1(mm)	120	120	120	120	120
4.18	Ground clearance at centre of wheelbase, loaded	m2(mm)	125	125	125	125	125
4.19	Min. stacking aisle width for pallet 1000*1200MM	mm	3754	3754	3754	3754	3754
	Min. stacking aisle width for pallet 8001200MM	mm	3950	3950	3950	3950	3950
	Other stacking aisle width	mm					
4.2	Turning radius	Wa(mm)	2100	2100	2100	2100	2100

Performance

5.1	Travel speed, loaded/unloaded	km/h	18/19	18/19	14.5/15	14.5/15	12/13	12/13
5.2	Lifting speed, loaded/unloaded	mm/s	380/490	350/490	290/440	290/440	260/400	260/400
5.3	Lowering speed, loaded/unloaded	mm/s	400/400	400/400	400/400	400/400	400/400	400/400
5.4	Max. traction(Load/unload)	N	19000	19000	14000	14000	11000	11000
5.5	Max. gradeability (Load/unload S2-2min)	%(tanθ)	22/28	20/28	17/26	15/25	15/25	15/25
5.6	Acceleration time, loaded/unloaded(10m)	S						
5.7	Service brake	Hydraulic	Hydraulic	Hydraulic	Hydraulic	Hydraulic	Hydraulic	Hydraulic
	Parking brake	Mechanical	Mechanical	Mechanical	Mechanical	Mechanical	Mechanical	Mechanical

Drive

6.1	Drive motor rating S2=60	kw	AC16.6	AC16.6	AC11	AC11	AC11	AC11
6.2	Lift motor rating S3=15%	kw	AC21	AC21	AC12	AC12	AC12	AC12
6.3	Lead-acid battery voltage/ Nominal Capacity)	V/Ah			48/600	48/600	48/500	48/500
6.4	Lead-acid battery capacity (Optional)	V/Ah			500	500	600	600
6.5	Max capacity for side change battery	Ah			600	600	600	600
6.6	Lead-acid battery weight	kg			920	920	820	820
6.7	Lithium battery voltage/ Nominal capacity	V/Ah	80/300	80/300	48/300	48/300	48/300	48/300
6.8	Lithium battery voltage/ Nominal capacity (Optional)	V/Ah	80/400	80/400	48/460	48/460	48/460	48/460
6.9	Lithium battery weight	kg	345	345	345	345	345	345
7.1	Hydraulic system pressure		21.5	21.5	21.5	21.5	21.5	21.5

NOTE1: The driving speed,lifting and lowering speed, gradeability, and other parameters in the above table are tested from the standard model with ordinary duplex mast.
NOTE2: The standard model data would vary according to the configuration.

Characteristics

1.1	Manufacturer	MiMA	MiMA	MiMA	MiMA	MiMA	MiMA
1.2	Model	MK30H	MK35H	MK38H	MK30M	MK35M	MK38M
1.3	Power type	Battery	Battery	Battery	Battery	Battery	Battery
1.4	Driving style	Seated	Seated	Seated	Seated	Seated	Seated
1.5	Rated load capacity	Q(kg)	3000	3500	3800	3000	3500
1.6	Load center	C(mm)	500	500	500	500	500
1.7	Front overhang	x(mm)	462	467	467	462	467
1.8	Wheelbase	y(mm)	1750	1750	1750	1750	1750

Tyre&Wheels

3.1	Wheel type	Pneumatic	Pneumatic	Solid Rubber	Pneumatic	Pneumatic	Solid Rubber
3.2	Drive wheel size	28x9-15-14PR	28x9-15-14PR	28x9-15	28 x9-15-14PR	28x9-15-14PR	28x9-15
3.3	Load wheel size	18x7-8-14PR	18x7-8-14PR	18x7-8	18 x7-8-14PR	18x7-8-14PR	18x7-8
3.4	Number of wheels,front/rear(x=drive wheel)	2X/2	2X/2	2X/2	2X/2	2X/2	2X/2
3.5	Wheel tread,drive side	b10(mm)	1040	1040	1040	1040	1040
3.6	Wheel tread,load side	b11(mm)	990	990	990	990	990

Dimensions

4.1	Mast tilting angle, F/R	α/β(°)	6/10	6/10	6/10	6/10	6/10
4.2	Mast closed height	h1(mm)					
4.3	Free lift height	h2(mm)	155	160	160	155	160
4.4	Lift height of rated capacity	h3(mm)	3300	3300	3300	3300	3300
4.5	Lift height	h3(mm)					
4.6	Mast extended height with load backrest	h4(mm)					
4.7	Overhead guard height	h6(mm)	2180	2180	2180	2180	2180
4.8	Seaf SIP point ground clearance	h7(mm)	1135	1135	1135	1135	1135
4.9	Height of traction pin from the ground	h10(mm)	330	330	330	330	330
4.1	Overall length	L1(mm)	3617	3622	3622	3617	3622
4.11	Length to fork face	L2(mm)	2547	2552	2552	2547	2552
4.12	Overall width	b1/b2(mm)	1260/1240	1260/1240	1260/1240	1260/1240	1260/1240
4.13	Fork size	l/e/s(mm)	1070/125/45	1070/125/50	1070/125/50	1070/125/45	1070/125/50
4.14	Installation level	3A	3A	3A	3A	3A	3A
4.15	Fork carriage width	b3(mm)	1100	1100	1100	1100	1100
4.16	Fork outside width	b5(mm)	1060~250	1060~250	1060~250	1060~250	1060~250
4.17	Ground clearance at mast,loaded	m1(mm)	130	130	130	130	130
4.18	Ground clearance at centre of wheelbase ,loaded	m2(mm)	135	135	135	135	135
4.19	Min. stacking aisle width for pallet 1000*12	mm	3884	3889	3889	3884	3889
	Min. stacking aisle width for pallet 800120	mm	4082	4087	4087	4082	4087
	Other stacking aisle width	mm					
4.20	Minimum turning radius	Wa(mm)	2220	2220	2220	2220	2220

Performance

5.1	Travel speed, loaded/unloaded	km/h	19/20	18/19	17/18	15/15	14/15
5.2	Lifting speed, loaded/unloaded	mm/s	400/520	380/520	360/520	290/440	280/440
5.3	Lowering speed, loaded/unloaded	mm/s	400/400	400/400	400/400	400/400	400/400
5.4	Max. traction(Load/unload)	N	19500	19500	19500	17000	17000
5.5	Max. gradeability (Load/unload S2-2min)	%(tanθ)	20/28	18/28	15/28	17/26	15/20
5.6	Acceleration time, loaded/unloaded(10m)	S					
5.7	Service brake	Hydraulic	Hydraulic	Hydraulic	Hydraulic	Hydraulic	Hydraulic
	Parking brake	Mechanical	Mechanical	Mechanical	Mechanical	Mechanical	Mechanical

Drive

6.1	Drive motor rating S2=60	kw	AC16.6	AC16.6	AC16.6	AC15	AC15
6.2	Lift motor rating S3=15%	kw	AC25.5	AC25.5	AC25.5	AC16	AC16
6.3	Lead-acid battery voltage/capacity(standard)	V/Ah	/	/	/	80/500	80/500
6.4	Lead-acid battery capacity(optional)	Ah	/	/	/	400	400
6.5	Max capacity for side change battery	Ah	/	/	/	400	400
6.6	Lead-acid battery weight(standard)	kg	/	/	/	1320	1320
6.7	Lithium battery voltage/capacity(standard)	V/Ah	80/400	80/400	80/400	80/300	80/300
6.8	Lithium battery voltage/capacity(optional)	V/Ah	80/600、300	80/600、300	80/600、300	80/600、400	80/600、400
6.9	Lithium Battery weight(standard)	kg	460	460	460	460	460
7.1	Hydraulic system pressure	Mpa	21.5	21.5	21.5	21.5	21.5

NOTE: The driving speed,lifting and lowering speed, gradeability, and other parameters in the above table are tested from the standard model with ordinary duplex mast.

NOTE: The standard model data would vary according to the configuration.

Characteristics

1.1	Manufacturer	MiMA	MiMA	MiMA	MiMA
1.2	Model	MK30S	MK35S	MK38S	MK40S
1.3	Power type	Battery	Battery	Battery	Battery
1.4	Driving style	Seated	Seated	Seated	Seated
1.5	Rated load capacity	Q(kg)	3000	3500	3800
1.6	Load center	C(mm)	500	500	500
1.7	Front overhang	x(mm)	462	467	467
1.8	Wheelbase	y(mm)	1750	1750	1750

Weights

2.1	Service weight(incl.battery)	kg	4798/3678	5136/4016	5466/4336	5644/4524
-----	------------------------------	----	-----------	-----------	-----------	-----------

Tyre&Wheels

3.1	Wheel type	Pneumatic	Pneumatic	Solid Rubber	Solid Rubber
3.2	Drive wheel size	28x9-15-14PR	28x9-15-14PR	28x9-15	28x9-15
3.3	Load wheel size	18x7-8-14PR	18x7-8-14PR	18x7-8	18x7-8
3.4	Number of wheels,front/rear(x=drive wheel)	2X/2	2X/2	2X/2	2X/2
3.5	Wheel tread,drive side	b10(mm)	1040	1040	1040
3.6	Wheel tread,load side	b11(mm)	990	990	990

Dimensions

4.1	Mast tilting angle, F/R	α/β(°)	6/10	6/10	6/10	6/10
4.2	Mast closed height	h1(mm)				
4.3	Free lift height	h2(mm)	155	160	160	160
4.4	Lift height of rated capacity	h3(mm)	3300	3300	3300	3300
4.5	Lift height	h3(mm)				
4.6	Mast extended height with load backrest	h4(mm)				
4.7	Overhead guard height	h6(mm)	2180	2180	2180	2180
4.8	Seat height	h7(mm)	1135	1135	1135	1135
4.9	Height of traction pin from the ground	h10(mm)	330	330	330	330
4.1	Overall length	L1(mm)	3617	3622	3622	3622
4.11	Length to fork face	L2(mm)	2547	2552	2552	2552
4.12	Overall width	b1/b2(mm)	1260/1240	1260/1240	1260/1240	1260/1240
4.13	Fork size	l/e/s(mm)	1070/125/45	1070/125/50	1070/125/50	1070/125/50
4.14	Installation level	3A	3A	3A	3A	3A
4.15	Fork carriage width	b3(mm)	1100	1100	1100	1100
4.16	Fork outside width	b5(mm)	1060~250	1060~250	1060~250	1060~250
4.17	Ground clearance at mast, loaded	m1(mm)	130	130	130	130
4.18	Ground clearance at centre of wheelbase loaded	m2(mm)	135	135	135	135
4.19	Min. stacking aisle width for pallet 1000*1200MM	mm	3884	3889	3889	3889
	Min. stacking aisle width For pallet 8001200MM	mm	4082	4087	4087	4087
	Other stacking aisle width	mm				
4.2	Minimum turning radius	Wa(mm)	2220	2220	2220	2220

Performance

5.1	Travel speed, loaded/unloaded	km/h	12/13	12/13	12/13	12/13
5.2	Lifting speed, loaded/unloaded	mm/s	260/400	260/400	250/400	250/400
5.3	Lowering speed, loaded/unloaded	mm/s	400/400	400/400	400/400	400/400
5.4	Max. traction(Load/unload)	N	16000	16000	16000	16000
5.5	Max. gradeability (Load/unload S2-2min)	%(tanθ)	15/24	14/22	12/20	10/18
5.6	Acceleration time, loaded/unloaded(10m)	S				
5.7	Service brake	Hydraulic	Hydraulic	Hydraulic	Hydraulic	Hydraulic
	Parking brake	Mechanical	Mechanical	Mechanical	Mechanical	Mechanical

Drive

6.1	Drive motor rating S2=60	kw	AC15	AC15	AC15	AC15
6.2	Lift motor rating S3=15%	kw	AC16	AC16	AC16	AC16
6.3	Lead-acid battery voltage/capacity(standard)	V/Ah	80/400	80/400	80/400	80/400
6.4	Lead-acid battery capacity(optional)	Ah	500	500	600	600
6.5	Max capacity for side change battery	Ah	400	400	400	400
6.6	Lead-acid battery weight(standard)	kg	1120	1120	1120	1120
6.7	Lithium battery voltage/capacity(standard)	V/Ah	80/300	80/300	80/300	80/300
6.8	Lithium battery voltage/capacity(optional)	V/Ah	80/600、400	80/600、400	80/600、400	80/600、400
6.9	Lithium battery weight(standard)	kg	460	460	460	460
7.1	Hydraulic system pressure	Mpa	21.5	21.5	21.5	21.5

NOTE: The driving speed,lifting and lowering speed, gradeability, and other parameters in the above table are tested from the standard model with ordinary duplex mast.

NOTE: The standard model data would vary according to the configuration.

MAST SPECIFICATION

Mast Type	MK15					MK20-25					MK30-40				
	Mast Model	Lifting Height	Mast Closed Height	Mast Extended Height	Free Lifting Height (with load backrest)	Mast Model	Lifting Height	Mast Closed Height	Mast Extended Height	Free Lifting Height (with load backrest)	Mast Model	Lifting Height	Mast Closed Height	Mast Extended Height	Free Lifting Height (with load backrest)
	mm					mm					mm				
Duplex Mast	Model > MK				15	Model > MK				20 25	Model > MK				30 35 38 40
	60L	6000	3610	7060	145	60L	6000	3630	7060	150 150	60L	6000	3745	7190	155 160
	55L	5500	3360	6560	145	55L	5500	3380	6560	150 150	55L	5500	3495	6690	155 160
	50L	5000	3060	6060	145	50L	5000	3080	6060	150 150	50L	5000	3195	6190	155 160
	45L	4500	2810	5560	145	45L	4500	2830	5560	150 150	45L	4500	2945	5940	155 160
	40L	4000	2560	5060	145	40L	4000	2580	5060	150 150	40L	4000	2695	5190	155 160 160 160
	37L	3700	2360	4760	145	37L	3700	2380	4760	150 150	37L	3700	2495	4890	155 160 160 160
	35L	3500	2260	4560	145	35L	3500	2280	4560	150 150	35L	3500	2395	4690	155 160 160 160
	33L	3300	2160	4360	145	33L	3300	2180	4360	150 150	33L	3300	2295	4490	155 160 160 160
	30L	3000	2010	4060	145	30L	3000	2030	4060	150 150	30L	3000	2145	4190	155 160 160 160
	27L	2700	1860	3760	145	27L	2700	1880	3760	150 150	27L	2700	1995	3890	155 160 160 160
	25L	2500	1760	3560	145	25L	2500	1780	3560	150 150	25L	2500	1895	3690	155 160 160 160
20L	2000	1510	3060	145	20L	2000	1530	3060	150 150	20L	2000	1645	3190	155 160 160 160	
Duplex Full Free Mast	60Q	6000	3610	7060	2545	60Q	6000	3630	7199	2560 2560	60Q	6000	3745	7199	2540 2545
	55Q	5500	3360	6560	2295	55Q	5500	3380	6699	2310 2310	55Q	5500	3495	6699	2290 2295
	50Q	5000	3060	6060	1995	50Q	5000	3080	6199	2010 2010	50Q	5000	3195	6199	1990 1995
	45Q	4500	2810	5560	1745	45Q	4500	2830	5699	1760 1760	45Q	4500	2945	5699	1740 1745
	40Q	4000	2560	5060	1495	40Q	4000	2580	5199	1510 1510	40Q	4000	2695	5199	1490 1495 1495 1495
	37Q	3700	2360	4760	1295	37Q	3700	2380	4899	1310 1310	37Q	3700	2495	4899	1290 1295 1295 1295
	35Q	3500	2260	4560	1195	35Q	3500	2280	4699	1210 1210	35Q	3500	2395	4699	1190 1195 1195 1195
	33Q	3300	2160	4360	1095	33Q	3300	2180	4499	1110 1110	33Q	3300	2295	4499	1090 1095 1095 1095
	30Q	3000	2010	4060	945	30Q	3000	2030	4199	960 960	30Q	3000	2145	4199	940 945 945 945
	27Q	2700	1860	3760	795	27Q	2700	1880	3899	810 810	27Q	2700	1995	3899	790 795 795 795
	25Q	2500	1760	3560	695	25Q	2500	1780	3699	710 710	25Q	2500	1895	3699	690 695 695 695
	20Q	2000	1510	3060	445	20Q	2000	1530	3069	460 460	20Q	2000	1645	3199	440 445 445 445
Triplex Full Free Mast	70T	7000	2943	8060	1878	70T	7000	2963	8060	1893 1893	70T	7000	3008	8190	1803 1808
	68T	6800	2877	7860	1812	68T	6800	2897	7860	1827 1827	68T	6800	2942	7990	1737 1742
	65T	6500	2777	7560	1712	65T	6500	2797	7560	1727 1727	65T	6500	2842	7690	1637 1642
	63T	6300	2710	7360	1645	63T	6300	2730	7360	1660 1660	63T	6300	2775	7490	1570 1575
	60T	6000	2610	7060	1545	60T	6000	2630	7060	1560 1560	60T	6000	2675	7190	1470 1475 1475 1475
	55T	5500	2443	6560	1378	55T	5500	2463	6560	1393 1393	55T	5500	2508	6690	1303 1308 1308 1308
	50T	5000	2277	6060	1212	50T	5000	2297	6060	1227 1227	50T	5000	2342	6190	1137 1142 1142 1142
	48T	4800	2210	5860	1145	48T	4800	2230	5860	1160 1160	48T	4800	2275	5990	1070 1075 1075 1075
	47T	4700	2177	5760	1112	47T	4700	2197	5760	1127 1127	47T	4700	2242	5890	1037 1042 1042 1042
	45T	4500	2110	5560	1045	45T	4500	2130	5560	1060 1060	45T	4500	2175	5690	970 975 975 975
	40T	4000	1943	5060	878	40T	4000	1963	5060	893 893	40T	4000	2008	5190	803 808 808 808
	36T	3600	1810	4660	745	36T	3600	1830	4660	760 760	36T	3600	1875	4790	670 675 675 675

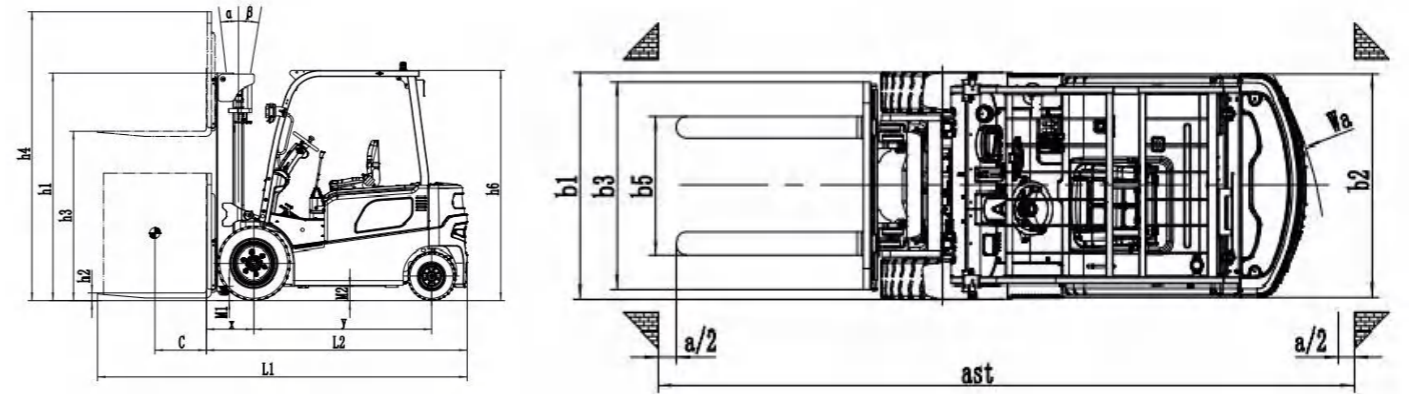
Standard configuration

- Inmotion controller
- 1070mm forks
- Albright contactor
- Emergency stop
- Load backrest
- OPS system
- Reverse buzzer
- Wide-angle rear-view mirror
- Adjustable seat and steering wheel
- Fan (H-series)
- USB (H&M-series)
- Multi-valve joysticks operation
- Lead-acid battery
- LED working lights
- Silent warning light
- Full AC system
- English instrument
- REMA /Anderson power connector
- Button reversing armrest (H&M)
- Tool box

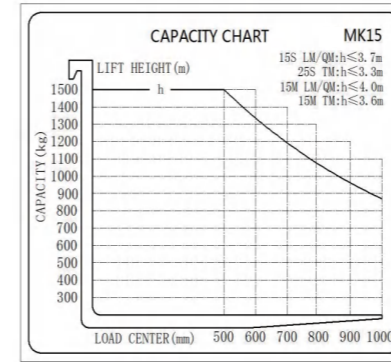
Optional configuration

- Curtis / ZAPI Controller
- Li-ION battery
- Customized color
- Widen and heighten the load backrest
- Turning speed limit
- NFC magnetic card
- Proportional fingertips operation
- Automatic water replenishment system
- Cold storage
- Explosion proof vehicle
- Long forks
- Side shifter
- Forks positioner
- Various attachment
- Line-shape LED lights
- Side pull battery
- Extinguisher
- Seat belt switch

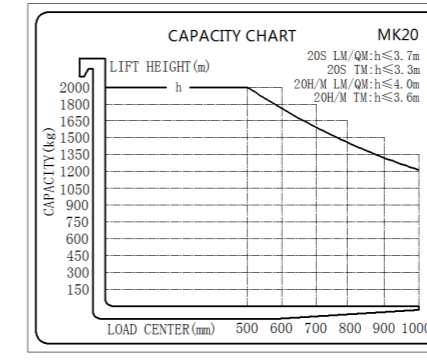
2D VIEW



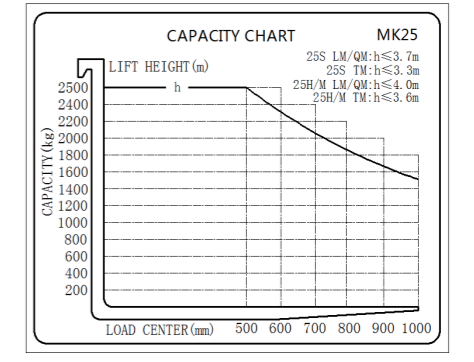
CAPACITY CHART



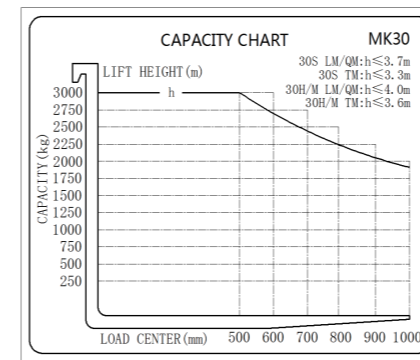
MK15



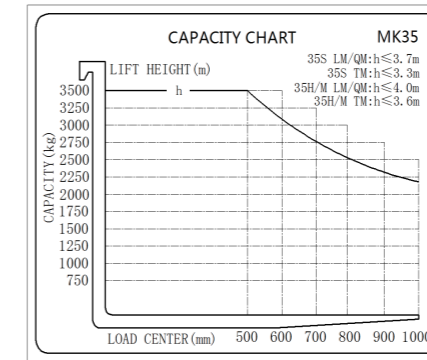
MK20



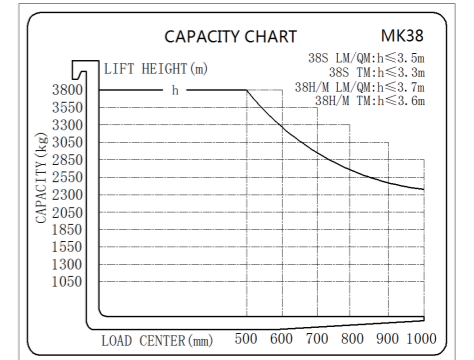
MK25



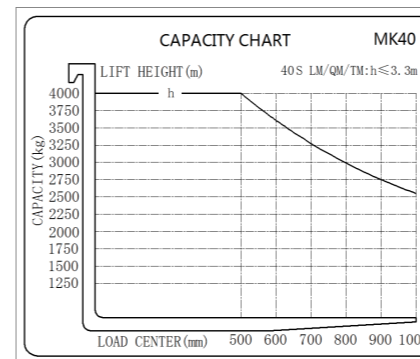
MK30



MK35



MK38



MK40



1994

Nearly 30 years of forklift history

600+

Employees

50+

National invention patents

72000m²

Total area

Founded in 1994, Banyitong Science & Technology Developing Co., Ltd. is a high-tech enterprise specializing in designing and manufacturing high-end electric material handling equipment. The company covers an area of 72,000 square meters with 600 employees. We are one of the first batch of national "SRDI"(Specialization, Refinement, Differentiation, Innovation)small giant enterprises in Anhui Province, with a highly qualified R&D team of over 100 engineers. We're also an industrial technology R&D center in Anhui province.

"MiMA", our product brand, is interpreted as Min. Space, Max. Performance! We aim to create more excellent value for customers through our professional products and realize more fantastic dreams together with our customers.